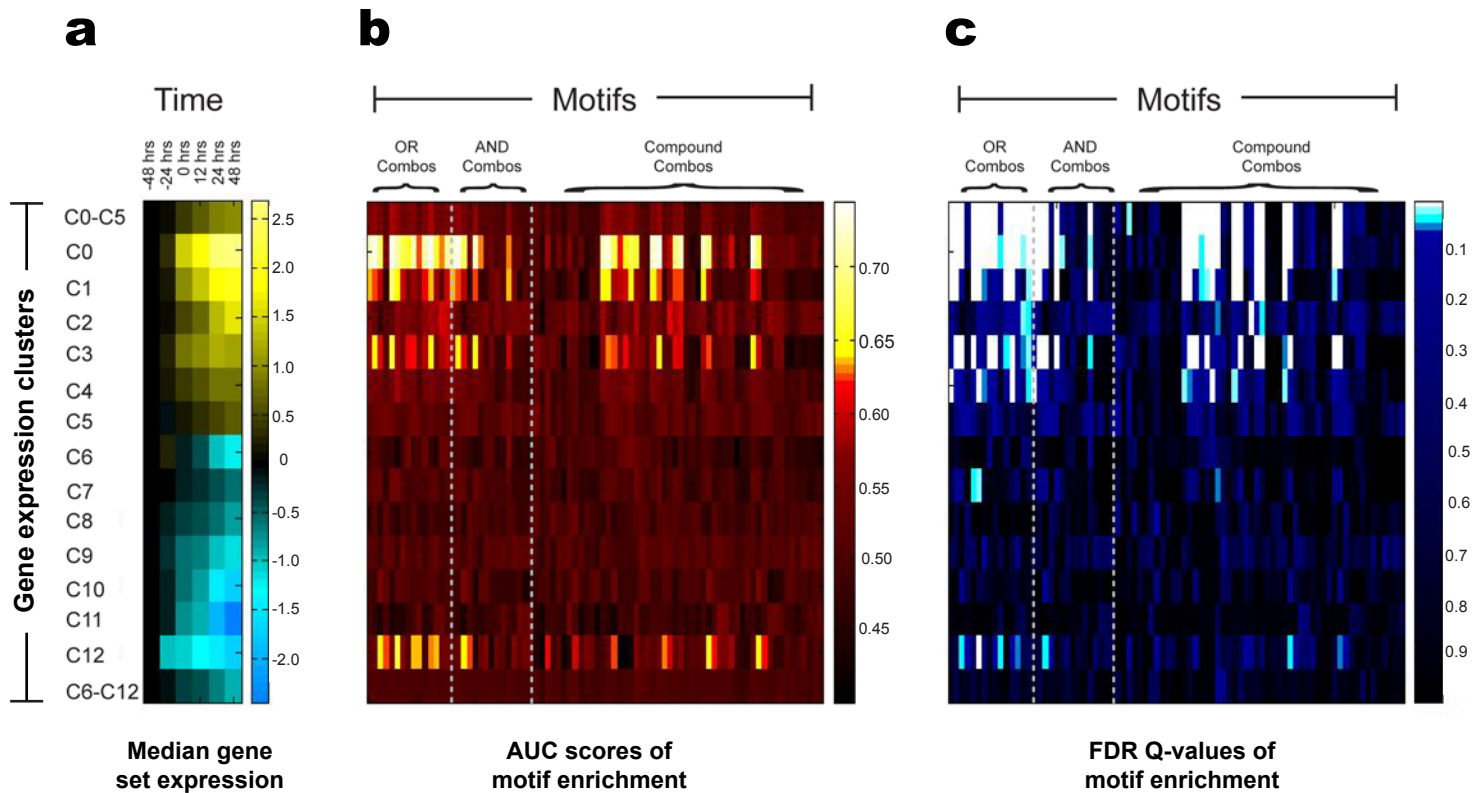


Supplementary Figure 5



Supplementary Figure 5: Lever screen of time course of human skeletal muscle differentiation. (a) Median arcsinh value (relative to -48 hrs) of each considered expression cluster or combination of clusters. (b) AUC values for each TF binding site motif combination and gene set (GM-pair). (c) FDR q-value for each GM pair computed by Lever using a permutation test.